

This Question Paper contains 12 printed pages.  
(Sections - A, B, C & D)

Sl.No. 096779

11 (E)

(FEBRUARY-MARCH, 2026)

Time : 3 Hours]

[Maximum Marks : 80

**Instructions :**

- 1) This question paper has a total of 54 questions divided into sections A, B, C and D.
- 2) General options are provided in the questions, but in figure/graph based questions, the question given as an internal option for visually impaired students should be taken into consideration.
- 3) Question number 28(B), 42(B), 50(B), 52(B) and 53 (B) in this question paper is only for visually impaired students.
- 4) The numbers to the right along with the sections Instruction indicate its marks.
- 5) New sections should be written in a new page. Write the answers in numerical order.
- 6) Draw neat diagrams wherever necessary.
- 7) Do not use calculators, smart watches, or digital watches.
- 8) Write in a clear and legible handwriting.

**SECTION - A**

- Answer the questions 1 to 24 as directed. (Each question carries 1 mark.) [24]

Choose the correct option from the following multiple choice questions :

- 1) A solution turns blue litmus red. Its pH is likely to be \_\_\_\_\_ [1]
- (A) 3
- (B) 7
- (C) 10
- (D) 14



- 2) Which of the following is the molecular formula of butane? [1]
- (A)  $C_4H_4$
  - (B)  $C_4H_6$
  - (C)  $C_4H_{10}$
  - (D)  $C_4H_8$
- 3) From how many chambers is the heart of a fish made? [1]
- (A) 3
  - (B) 2
  - (C) 4
  - (D) 5
- 4) The human eye forms the image of an object at its \_\_\_\_\_ [1]
- (A) Cornea
  - (B) Iris
  - (C) Pupil
  - (D) Retina



5) Which of the following terms does not represent electrical power in a circuit? [1] S - 309

(A)  $I^2R$

(B)  $VI$

(C)  $\frac{V^2}{R}$

(D)  $IR^2$

6) No matter how far you stand from a mirror, your image appears erect. The mirror is likely to be. [1]

(A) Only concave

(B) Either plane or convex

(C) Only plane

(D) Only convex

■ Fill in the blanks with correct answer :

7) Butanone is a four - carbon compound with the functional group \_\_\_\_\_ [1]

(ketone, alcohol, aldehyde)

8) 1 kWh = \_\_\_\_\_ joule (J) [1]

( $3.6 \times 10^8$ ,  $36 \times 10^6$ ,  $3.6 \times 10^6$ )



- 9) The transport of soluble products of photosynthesis by phloem is called \_\_\_\_\_ [1]  
(translocation, respiration, transpiration)
- 10) Children inherit traits of their parents received through \_\_\_\_\_. [1]  
(cytoplasm, genes, ribosome)
- 11) The radius of curvature of a spherical mirror is 40 cm. Then its focal length is \_\_\_\_\_ cm. [1]  
(20, 40, 80)
- 12) \_\_\_\_\_ is an alloy of Cu + Zn. [1]  
(Brass, Bronze, Solder)

■ State whether the following statements are true or false :

- 13) Iodine is a non-metal, but it is lustrous. [1]
- 14) The red light bends the most in dispersion of white light by the prism. [1]
- 15) A child who inherits a 'Y' chromosome from the father will be a boy. [1]
- 16) The salts of strong acid and weak base are acidic with pH value more than 7. [1]

■ Answer the following questions as directed in one word or a sentence :

- 17) What is the gap between neurons called? [1]
- 18) What is the time difference between actual sunset and the apparent sunset? [1]
- 19) In Mendel's experiment of a pea plant, the traits that are expressed in F<sub>2</sub> generation are TT, Tt, tt. Sort the dominant traits and recessive traits. [1]
- 20) Which instrument is used to measure the potential difference? [1]

■ Match the following :

A

B

- 21) Spinal cord a) Salivation and Vomiting [1]
- 22) Medulla b) Reflex action [1]
- c) Thinking process

A

B

- 23) Grass a) Secondary consumers [1]
- 24) Deer b) Producers [1]
- c) Primary consumers

### SECTION - B

■ Answer any Nine (9) questions from the Q.No. 25 to 37 in word limit of 40 to 50 words approximately as directed : (Each question carries 2 marks) [18]

25) Why should a magnesium ribbon be cleaned before burning in air? [2]

26) The reaction between compound 'X' and aluminium is used to join the railway tracks. [2]

- Identify and name the compound 'X'.
- Name the reaction and write its equation.

27) Differentiate between Artery and Vein. [2]

28) A) This question is only for normal students. [2]

Draw neat and labelled diagram of Human excretory system.

28) B) This question is only for Visually impaired students. [2]

Name any four organs of Human excretory system.

29) Which type of asexual reproduction is shown by the following organisms? [2]

- Amoeba
- Planaria

30) Explain why the planets do not twinkle. [2]

31) An electric bulb is connected to a 220 V generator. The current is 0.50A. What is the power of the bulb? [2]

32) On what factors does the resistance of a conductor depend? [2]

RMU43

6

II (E)

S - 309

33) Name two safety measures commonly used in electric circuits and appliances. [2]

34) List the properties of magnetic field lines. [2]

35) What are trophic levels? Give an example of a food chain and state the different trophic levels in it. [2]

36) What is Ozone? How does it affect any ecosystem? [2]

37) What are the changes seen in the boys at the time of puberty? [2]

### SECTION - C

■ Answer any Six (6) questions from the Q.No. 38 to 46 in word limit of 60 to 80 words approximately as directed : (Each question carries 3 marks) [18]

38) Write the balanced equation for the following chemical reactions. [3]

- Hydrogen + Chlorine  $\rightarrow$  Hydrogen Chloride
- Calcium hydroxide + Carbon dioxide  $\rightarrow$  Calcium carbonate + Water
- Sodium + Water  $\rightarrow$  Sodium hydroxide + Hydrogen

39) Write physical properties of metals. [3]

40) What is corrosion? Suggest some remedies to prevent corrosion. [3]

41) Name the hormones and their functions secreted by the given endocrine glands. [3]

- Pancreas
- Thyroid gland
- Ovaries

RMU43

7

II (E)

(P.T.O.)

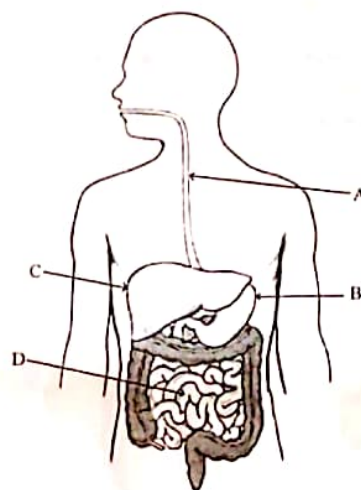
- 42) A) **This question is only for normal students.** [3]  
Explain female reproductive system with the help of neat and labelled diagram.
- 42) B) **This question is only for Visually impaired students.** [3]  
Differentiate between: Male reproductive system and Female reproductive system.
- 43) i) Write advantages of vegetative propagation in plants.  
ii) What are unisexual flowers? Give one example. [3]
- 44) What is power of lens? Write its formula and SI unit. [3]
- 45) A 2 cm tall object is placed perpendicular to the principle axis of a convex lens of Focal length 10 cm. The distance of the object from the lens is 15 cm. Find the nature, position and size of the image. [3]
- 46) Explain resistors in series connection and derive its formula for equivalent resistance. [3]

**SECTION - D**

- Answer any Five (5) questions from the Q.No. 47 to 54 in word limit of 90 to 120 words approximately as directed : (Each question carries 4 marks) [20]

- 47) i) Fresh milk has a pH of 6. How do you think the pH will change as it turns into curd? Explain your answer.  
ii) Which gas is usually liberated when an acid reacts with a metal? Illustrate with an example? [4]
- 48) Chlorine gas is used for the manufacture of a substance 'X' which is used for bleaching cotton and linen in the textile industry. [4]  
i) Name the substance 'X' and write its chemical formula.  
ii) Write the preparation and other uses of substance 'X'.

- 49) i) Differentiate between :  
Saturated hydrocarbons and Unsaturated hydrocarbons.  
ii) What is homologous series? Explain with an example. [4]
- 50) A) **This question is only for normal students.** [4]  
Observe the given diagram and answer the questions given below.



- i) Identify and name the given parts A,B,C and D.  
ii) Explain digestion process in B.

- 50) B) **This question is only for Visually impaired students.** [4]  
Name the organs of human digestive system. Explain the digestion process in small intestine.



51) Explain different pathways in which glucose is oxidised to provide energy in various organisms.

52) A) **This question is only for normal students.** [4]  
Draw neat and labelled diagram of human eye. Write the functions of pupil and lens.

52) B) **This question is only for Visually impaired students.** [4]  
What is myopia? Write its causes. How can it be corrected?

53) A) **This question is only for normal students.** [4]  
Draw and explain a schematic diagram of domestic electric circuit.

53) B) **This question is only for Visually impaired students.** [4]  
i) Write Fleming's left hand rule  
ii) Explain electric short - circuit.

54) i) Differentiate between :  
Biodegradable substance and Non biodegradable substance.  
ii) What is an ecosystem? Write its components with examples. [4]

